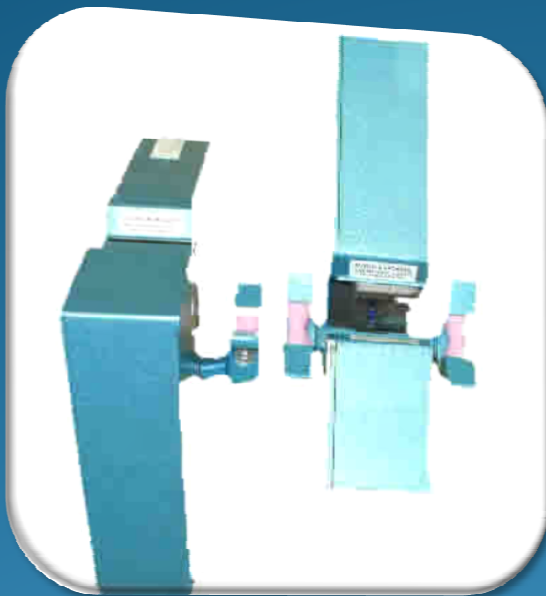




# Monolithic Industries

## STREAM-LINE™ BRACKET SYSTEMS ZUMBACH 18XY / 15XY DUAL SCANNER BRACKET



### PROBLEM



### SOLUTION

#### DUAL SCANNER MOUNTING ISSUES

- Scanners are awkwardly separated by guide arms
- 45 degree mounted scanner does not provide support for the tube. Tube can fall off guide.
- User must create plates and angle mounting fixtures. This wastes engineering time.
- Scanner to scanner distance can change or drift and skew reading accuracy and control of dimensions.

#### DUAL BRACKET SOLUTIONS

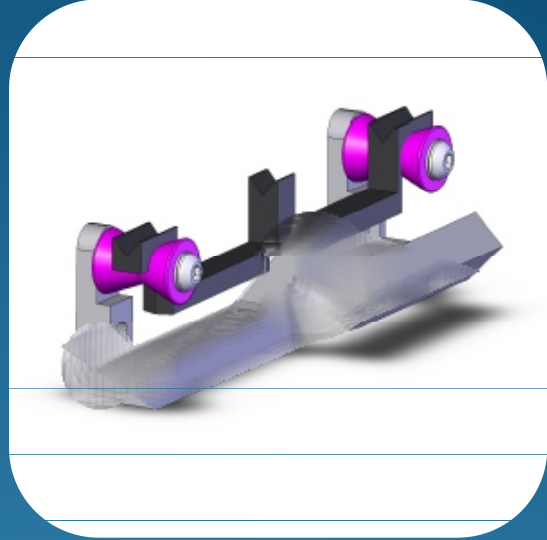
- Scanner housings now mate - creating a consistent measurement point distance between scanners.
- Tube is fully supported horizontally through the scanner fields.
- All fixture mounting has been designed. Put your engineering time to better use.

## BRACKET SYSTEM CONFIGURATIONS



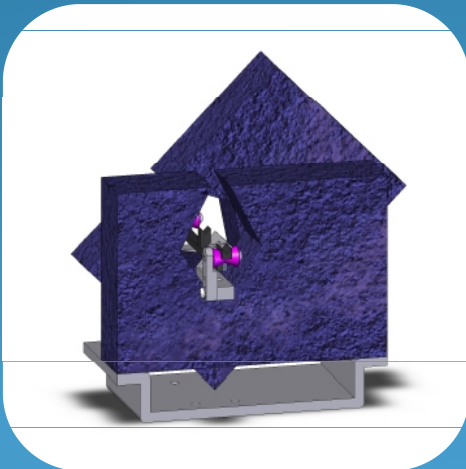
### DUAL SCANNER BRACKET

- Combine two scanners easily
- Creates a true 45 degree differential orientation between scanners for most accurate diameter readings



### SCANNER CALIBRATION FIXTURE OPTION

- Allows individual calibration of each scanner
- Eliminates the need to manually hold the calibration pin on the 45 degree angled scanner



### DUAL BRACKET ASSEMBLY WITH BASE PLATE

- Base plate provides mounting surface for one or two scanners
- This assembly mounts on the **Steam-Align™** Water Trough System or an available adjustable stand
- All the engineering has been done for you



*Rethinking Extrusion...*

**WWW.MONOLITHICINDUSTRIES.COM**  
**Oceanside CA - USA 1-888-987-6844**  
**Info@MonolithicIndustries.com**